



Warm Distribution

warm up your imagination



Heating Decorative

Panels



INFRARED TECHNOLOGY

Heating Decorative Panels represent the innovation of domestic heating, allowing saving energy and preserving the air from dust and moisture. Their operation is based on the technology infrared, or electromagnetic waves. These, propagating in the air, are absorbed by solid objects that storing emissions transform into thermal energy.



What is it?

- this is, fundamentally, a heater that diffuse the heat produced by infrared irradiating, healthy heat as the solar rays, mainly for heating domestic rooms.
- this has very low energy consumption, does not burn Oxygen like normal incandescent wire heaters,
- it does not emit ozone "O₃" and does not emit carbon monoxide "CO", extremely dangerous gas, and it does not emit carbon dioxide "Co₂",
- do not move or lift dust, so it is ideal for those who suffer from allergies to dust.



MODERN INTERIOR DESIGN

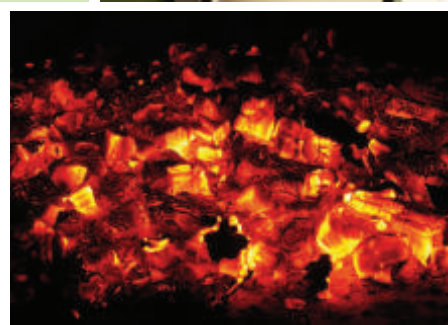
Heating Decorative Panels can be installed anywhere without the need to break walls or floors. They are suitable for every room and place: home, bar, office, company ...

Thanks to a careful design and elegance of the proposed images, the panels are an essential element of modern decor.



Why should we have it?

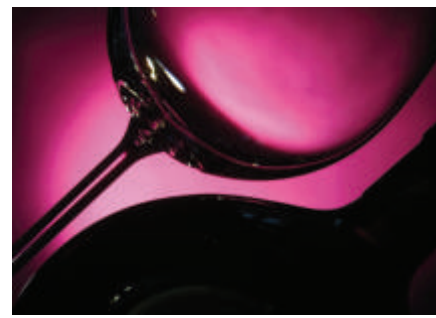
- it does not produce significant magnetic fields, noiseless,
- it makes no noise because it has no moving parts,
- it requires no special maintenance,
- it is lightweight and extremely easy to install,
- it no need work of masonry or installation, just two wall plugs supplied,
- it reaches the right temperature in few minutes,





ENERGY SAVING

The power required for heating, is minimal because the thermal energy is retained by the body without loss. It is not likely to evaporate as it happens in the classical systems of heating, where warm air tends to rise to the top and requires a greater amount of heat to reach an acceptable warmth.



Cost effective

- perfect for spring and autumn, come as alternative to heating oil or gas,
- very good in economics, when combined with the installation of photovoltaic panels at least 3 kW,
- it have a light switch and fixed socket connector with detachable cable or with connector in the back of panel for direct connection to the light. The panels can be also used as decorative elements even when not in operation,



TECHNOLOGY OF HEAT TRANSMISSION

Heating Decorative Panels are, in fact, directly heating people and objects in the room, spread homogeneity of temperature at any point of the environment. The heated walls and furniture accumulate heat and give them back to the room much more effectively than standard radiators because firstly the panels heat every object that is located in the area of human sensory. The temperature we feel using this type of heating is higher than the actual air temperature, so we can get a high thermal comfort.



Features

- heating decorative panel is a heating system that combines the technical solution of a heater with an ornamental picture, with photographic reproductions of various kinds,
- it also presents himself as an ornamental object, but exploiting at best the heat generation combining the radiation-exposure of the surfaces with a little natural convection of air, through the carrying out of appropriate channels predisposed posteriorly,
- the heat produced is transmitted (mainly by infrared radiations as the solar heat) from exposed surfaces and transposed directly from the person and solids forms, even in rooms substantially cold.





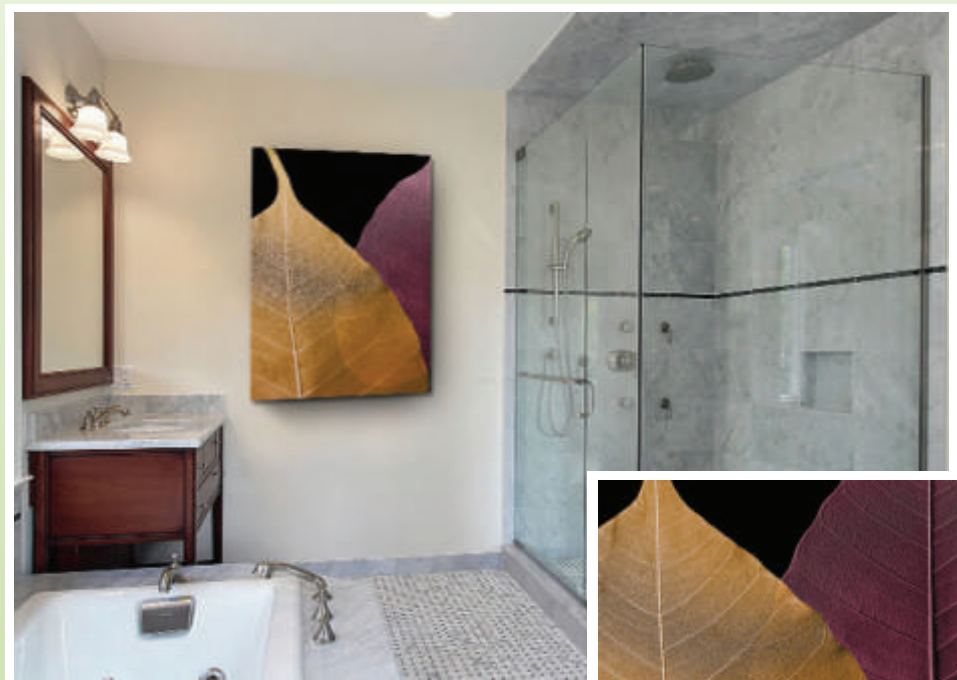
HEALTH...

Infrared rays are raising the internal temperature of the body and dilate the blood vessels, facilitating the disposal of fatty acids accumulated in our body. Medical studies have shown the beneficial effects of the infrared transmission. Their warmth give a pleasant feeling of comfort and relaxation to our body.



Health effects

- the most natural heating reminiscent of the sun's heat, but without the effect of UV radiation,
- preferably and mildly affects the metabolism, muscles, joints significantly affecting well-being. Recommended for people with arthritic problems,
- it does not dry the air, improve breathing comfort. Recommended for people with allergy problems,
- healthy heating system for children, often used in hospitals and in incubators for newborns.



...AND WELLNESS

Heating Decorative Panels do not raise the temperature of the air, prevents the formation of moisture in excessive doses what often represents the most common obstacle to breathing.

The device also avoids the formation of thermal currents in the air, reducing the dispersion of dust, pollen, animal dander and mites. All these advantages reduce the risk of allergies.



Well - being effects

- infrared technology is used in rehabilitation, cosmetics, SPA giving a positive effect on the reduction of cellulite,
- wind chill is from 2 to 4 °C higher than the air temperature, which gives a pleasant sensation of thermal comfort,
- electromagnetic waves transmitted reproduce the same heating mechanism as the rays of the sun, while maintaining the all beneficial effects.





ENVIRONMENT

Heating Decorative Panels produce infrared rays starting from an electric power plant. Their low power consumption, high efficiency and durability allow zero CO₂ emissions. The materials used are recyclable or have low environmental impact what make the product environmentally friendly.



Thermal radiant electric system advantages

- the yield is always 100%, seeing as the absorbed electric power is converted into heat and directly transmitted to the environment,
- the heat is diffused by radiation,
- irradiation is a propagation of infrared rays, also called thermal rays. This has the particularity, being an electromagnetic wave, of heating the solid (walls, floors, bodies, etc.) without heating the air,
- there is no dust in motion, the breathed air is cooler and people have the pleasant perception of a penetrating healthy heat.



UNIQUENESS

Heating Decorative Panels are the only radiant panels that can be customized with photos and images provided by the customer. You can have your favourite photo as an decorative image in your room.



Thermal radiant electric system more advantages...

- the temperatures of the rooms are homogeneous in all points: between floor and ceiling, there can be differences of 1-2° C,
- not having the need to heat the air, but only the wall structure and the body, there is no wastage and neither further releases related to the escape of hot air which in this case is no longer the carrier of the heat transported,
- all this is translated in a high energy saving and consequently of money.





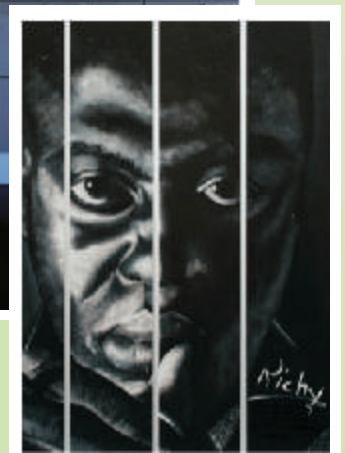
OPERATING

Decorative Heating Panels do not heat the air, as is the case with the traditional systems (radiators, fan heaters, fireplaces, etc.), but the people and objects in the same room where they are placed, conveying a feeling of warmth and well-being.



Technology used in the construction

- heating panel is a technologically advanced product with a carbon heart,
- panel employs the carbon fiber, or better, bundles composed of a few thousand carbon microfilaments used as heating element,
- is a high-tech product: the heater to carbon is assembled into a carpet of aramidic tissue, non-flammable, enclosed in a layers box of aluminium/polietilene/aluminium!



MAINTENANCE

Heating Decorative Panels do not require any type of maintenance. You can easily clean it with a microfiber cloth.



Service

- the unit requires no special maintenance,
- before cleaning the unit, disconnect the plug from the socket and make sure it is cool,
- for devices connected permanently to the power supply, make sure the appliance is disconnected by omnipolar switch upstream of the device,
- the equipment should never be immersed in water or other liquid,
- cleaning when the surfaces are cold with a damp cloth,
- before turn on the device, ensure that surfaces are dry.



Warmy Collection

General info

Warmy Collection – the panel is a box of aluminum “Diband”, inside there is the infrared electric resistance. The picture is printed directly over the aluminum. The panel do not require the frame.

Personalized photo will be made up to 15 days. Formats are the usual internet protocol, jpg, png, others common formats. 2-3 Megabites each one for a good quality.

Technical data/ dimensions

VOLTAGE (V)	POWER (Watt)	DIMENSIONS (cm)	TYPE (Vertical/ Horizontal)	WEIGHT (kg)
230 V 50	430 W	600x800	Vertical	4,90
230 V 50	430 W	800x600	Horizontal	5,65
230 V 50	430 W	1000x500	Horizontal	5,10
230 V 50	430 W	500x1000	Vertical	5,75
230 V 50	300 W	600 x 600	Neutral	3,30

Abstract



Cod. 0910VE004

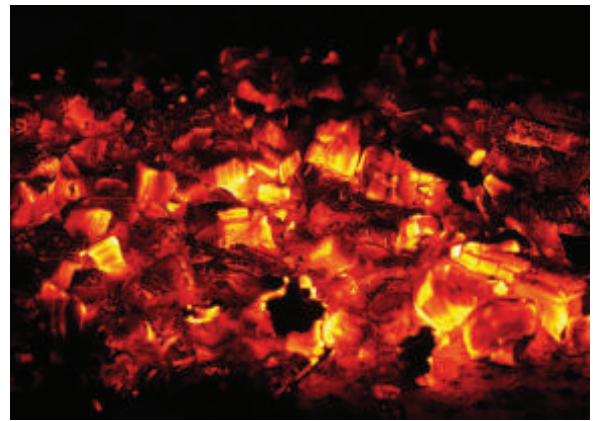


Cod. 0910VE002

Warmy Collection



Cod. 0910OR001



Cod. 0910OR002



Cod. 0910OR006

Food



Cod. 0910VE005 Ambient



Cod. 0910VE001



Warmy Collection



Cod. 0910OR007



Cod. 0910OR003



Cod. ADOLFO 3007



Cod. 1797



Cod. 0910OR003

Warmy Collection

Nature



Cod. 0910or008



Cod. 0910VE006



Cod. 0910VE003



Cod. 0910OR005



Cod. 0910OR004a



Cod. 0910OR004a



Warmy Collection



Cod. 0910OR004c



Cod. 0910OR012



Cod. 0910OR013



Cod. 0910OR004b



Cod. 0910OR011



Cod. 0910OR010



Cod. 0910VE007

Glassdesign

Warmy Collection (NEW):

General info

Glassdesign Warmy Collection – the panel is composed of two square of glasses. Between there is the picture, printed on a 3M film. Behind the second glass there is mounted on the infrared electric resistance.

Personalized photo will be made up to 15 days. Formats are the usual internet protocol, jpg, png, others common formats. 2-3 Megabites each one for a good quality.

Technical data/ dimensions

VOLTAGE (V)	POWER (Watt)	DIMENSIONS (cm)	TYPE (Vertical/ Horizontal)	TYPE
230 V 50/60 Hz	200 W	50x70	Vertical	A
230 V 50/60 Hz	200 W	70x50	Horizontal	B
230 V 50/60 Hz	370 W	70x90	Vertical	C
230 V 50/60 Hz	370 W	90x70	Horizontal	D



art. 101-B / 101-D



art. 102-B / 102-D



Glassdesign Warmy Collection



art. 103-B / 103-D



art. 104-B / 104-D



art. 105-B / 105-D



art. 106-A / 106-B / 106-C / 106-D



art. 107-B / 107-D



art. 108-B / 108-D

Glassdesign

Warmy Collection



art. 109-A / 109-C



art. 110-A / 110-C



art. 111-A / 111-C



art. 112-B / 112-D



art. 301-A / 301-B / 301-C / 301-D



art. 201-B / 201-D



art. 202-B / 202-D



art. 203-A / 203-C

Heating Decorative Panels



Warm Distribution

warm up your imagination

Monika Maciejewska

tel./ mobile: +48 663 533 009

e-mail: export.sales@wp.pl

e-mail: MonikaMaciejewska75@wp.pl

VAT: PL7531351753, REGON: 161546168